



Noise Monitoring Result

Day Time (0700 - 1900hrs on normal weekdays)

Location: M1a - Harbour Road Sports Centre

Date	Time	Weather	Measurement Noise Level			Baseline Level	Construction Noise Level	Limit Level
			Leq	L10	L90	Leq	Leq	Leq
Unit: dB(A), (30-min)								
02/02/16	13:00	Fine	77.1	79.5	72.5	72	75	75
11/02/16	8:45	Fine	75.4	77.0	72.5	72	73	75
16/02/16	10:54	Fine	79.1	81.0	76.0	72	78	75
23/02/16	10:34	Cloudy	82.7	83.5	81.5	72	82	75

Location: M2b - Noon-day gun area

Date	Time	Weather	Measurement Noise Level			Baseline Level	Construction Noise Level	Limit Level
			Leq	L10	L90	Leq	Leq	Leq
Unit: dB(A), (30-min)								
02/02/16	13:55	Fine	67.5	70.0	66.5	68	68	75
11/02/16	9:40	Fine	67.6	69.0	65.5	68	68	75
16/02/16	13:00	Fine	67.3	68.5	65.0	68	67	75
22/02/16	14:30	Cloudy	67.1	68.0	65.0	68	67	75

Location: M3a - Tung Lo Wan Fire Station

Date	Time	Weather	Measurement Noise Level			Baseline Level	Construction Noise Level	Limit Level
			Leq	L10	L90	Leq	Leq	Leq
Unit: dB(A), (30-min)								
02/02/16	14:41	Fine	64.9	66.5	62.5	69	65	75
11/02/16	10:24	Fine	65.7	66.0	64.0	69	66	75
16/02/16	13:45	Fine	65.9	67.0	64.0	69	66	75
23/02/16	13:00	Cloudy	65.7	67.0	63.5	69	66	75

Location: M4b - Victoria Centre

Date	Time	Weather	Measurement Noise Level			Baseline Noise Level	Construction Noise Level	Limit Level
			Leq	L10	L90	Leq	Leq	Leq
Unit: dB(A), (30min)								
02/02/16	15:25	Fine	65.1	66.0	61.0	67	65	75
11/02/16	11:03	Fine	64.5	66.0	61.5	67	65	75
16/02/16	14:25	Fine	68.5	71.0	63.5	67	62	75
23/02/16	13:40	Cloudy	67.2	69.0	64.0	67	67	75

Location: M5b - City Garden

Date	Time	Weather	Measurement Noise Level			Baseline Level	Construction Noise Level	Limit Level
			Leq	L10	L90	Leq	Leq	Leq
Unit: dB(A), (30min)								
03/02/16	14:25	Fine	68.8	70.5	63.0	68	61	75
11/02/16	14:57	Fine	66.1	67.5	63.5	68	66	75
16/02/16	15:05	Fine	66.5	68.0	64.0	68	67	75
23/02/16	14:20	Cloudy	67.1	68.5	64.5	68	67	75

Location: M6 - HK Baptist Church Henrietta Secondary School

Date	Time	Weather	Measurement Noise Level			Baseline Level	Construction Noise Level	Limit Level
			Leq	L10	L90	Leq	Leq	Leq
Unit: dB(A), (30-min)								
03/02/16	15:05	Fine	68.1	69.5	66.0	71	68	70
11/02/16	15:35	Fine	70.4	71.5	68.0	71	70	70
16/02/16	15:42	Fine	71.9	73.0	70.0	71	66	70
23/02/16	15:00	Cloudy	69.9	71.5	67.0	71	70	70



Noise Monitoring Result

Day Time (0700 - 1900hrs on normal weekdays)

Location: M7e - International Finance Centre (Eastern End of Podium) (Reference Station)

Date	Time	Weather	Measurement Noise Level			Baseline Level	Construction Noise Level	Limit Level
			Leq	L10	L90	Leq	Leq	Leq
Unit: dB(A), (30-min)								
02/02/16	8:35	Fine	69.4	70.5	66.5	67	66	N/A
12/02/16	8:30	Cloudy	65.0	66.5	63.0	67	65	N/A
16/02/16	8:30	Fine	62.5	65.5	61.0	67	63	N/A
23/02/16	8:10	Cloudy	64.5	65.5	63.5	67	65	N/A

Location: M7w - International Finance Centre (Western End of Podium)

Date	Time	Weather	Measurement Noise Level			Baseline Level	Construction Noise Level	Limit Level
			Leq	L10	L90	Leq	Leq	Leq
Unit: dB(A), (30-min)								
02/02/16	9:25	Fine	64.3	65.5	62.0	69	64	75
12/02/16	9:30	Cloudy	64.9	66.5	62.5	69	65	75
16/02/16	9:15	Fine	64.0	64.5	62.0	69	64	75
23/02/16	8:58	Cloudy	62.5	63.0	60.0	69	63	75

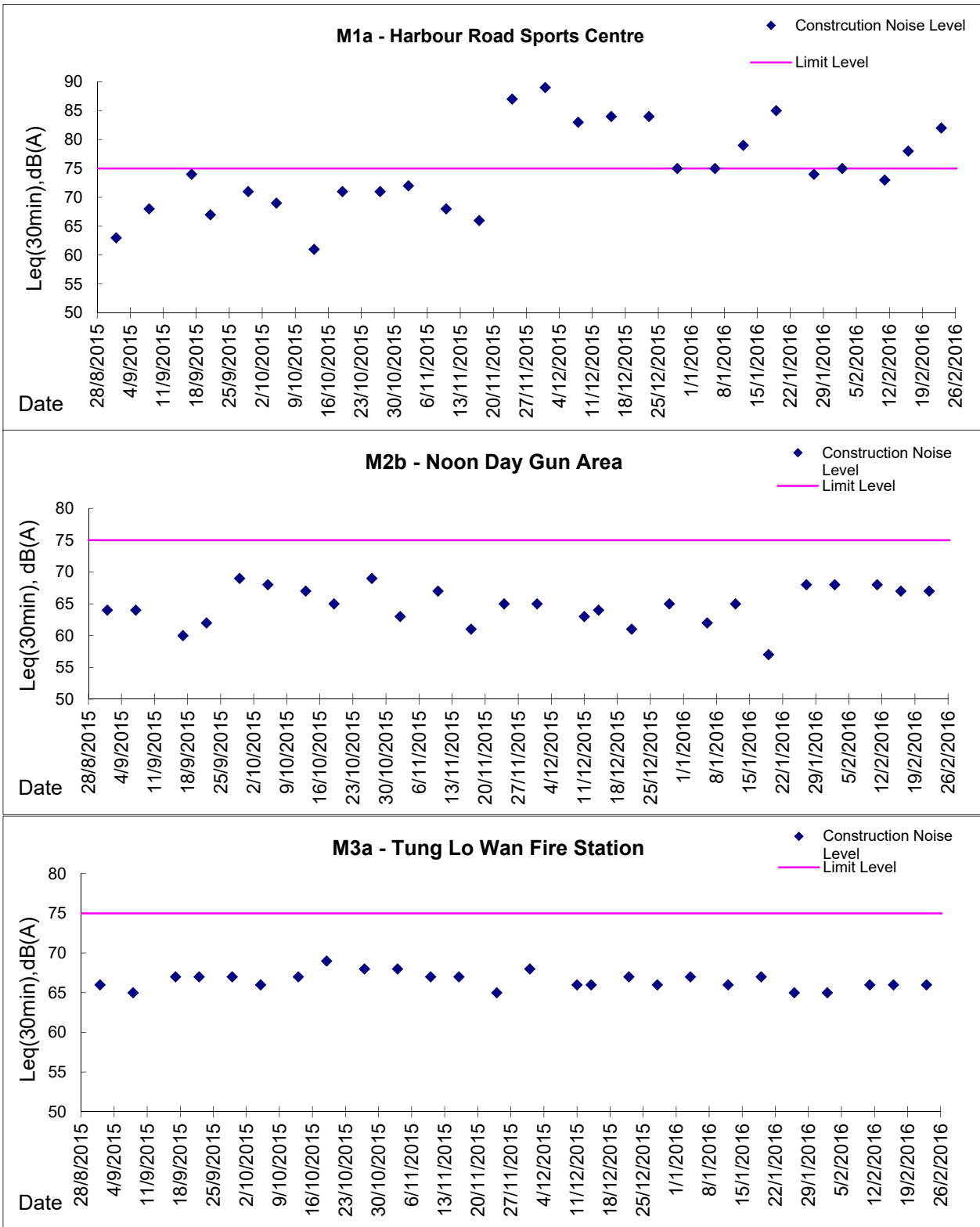
Location: M8 - City Hall

Date	Time	Weather	Measurement Noise Level			Baseline Level	Construction Noise Level	Limit Level
			Leq	L10	L90	Leq	Leq	Leq
Unit: dB(A), (30-min)								
02/02/16	10:30	Fine	60.3	62.0	58.0	64	60	70
12/02/16	10:30	Cloudy	58.6	60.5	55.0	64	59	70
16/02/16	10:00	Fine	60.5	62.0	56.5	64	61	70
23/02/16	9:40	Cloudy	60.9	62.5	57.0	64	61	70



Graphic Presentation of Noise Monitoring Result

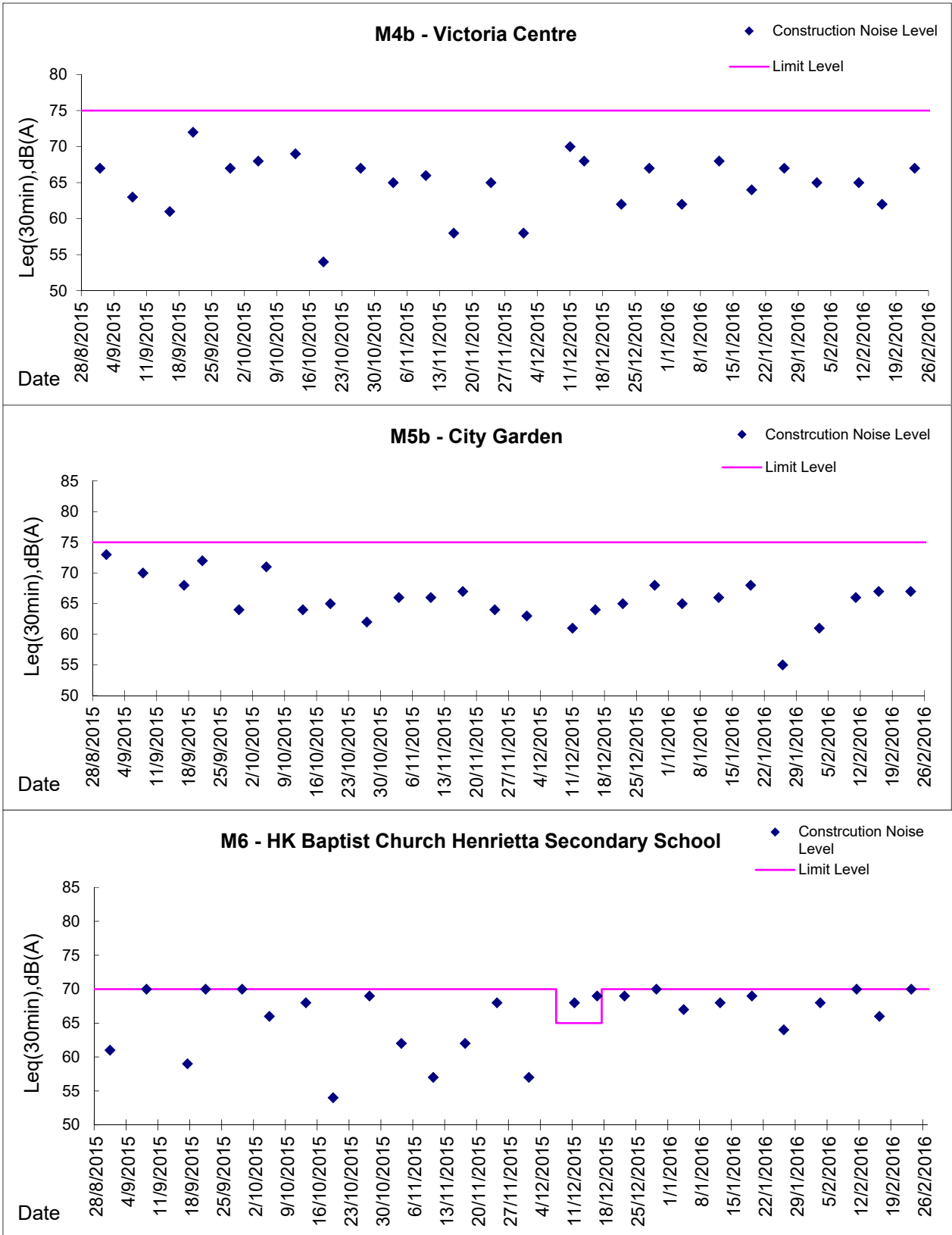
Day Time (0700 - 1900hrs on normal weekdays)





Graphic Presentation of Noise Monitoring Result

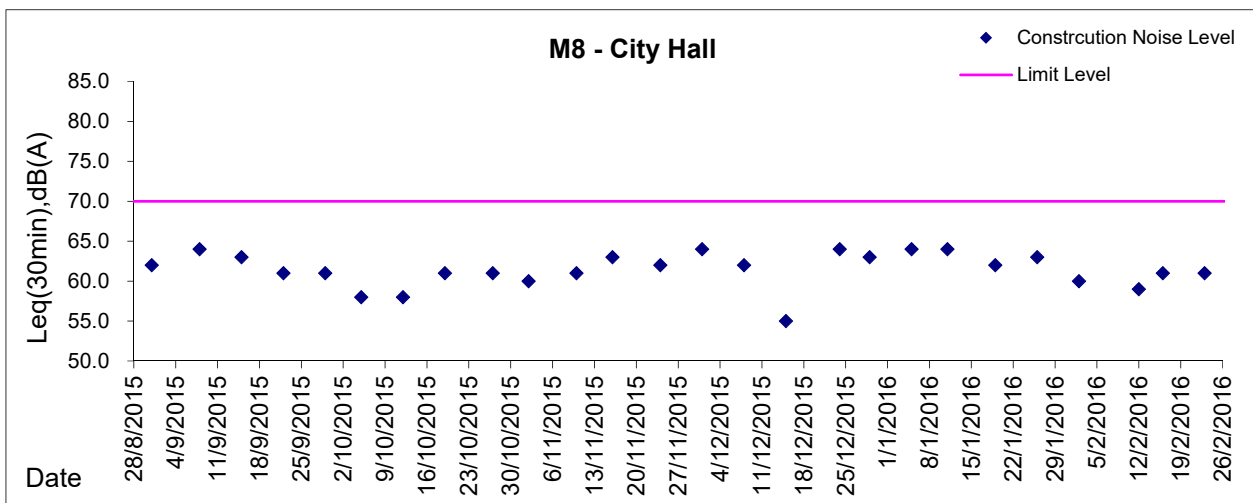
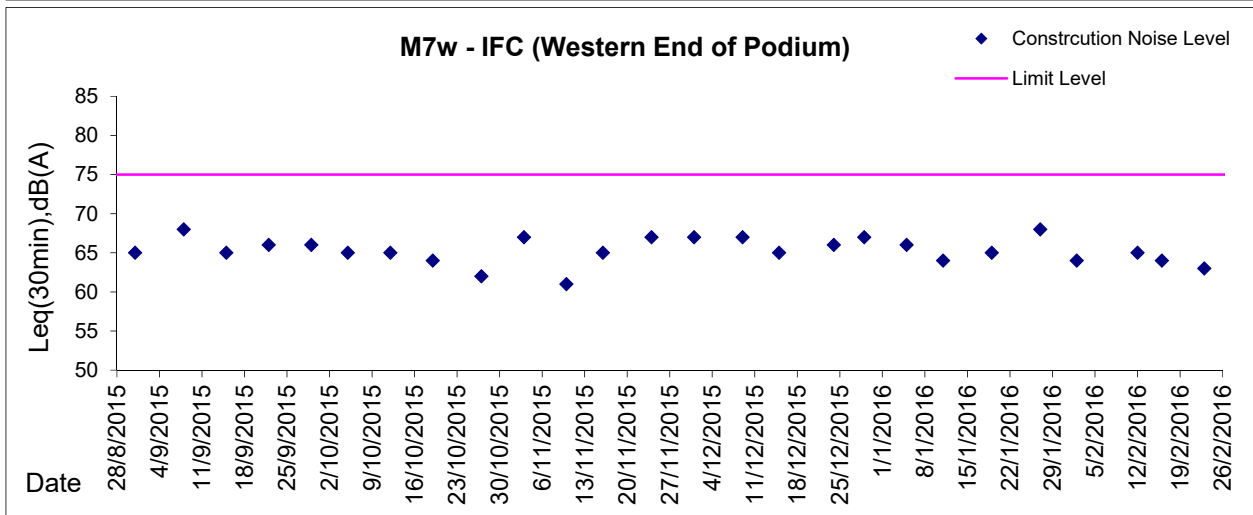
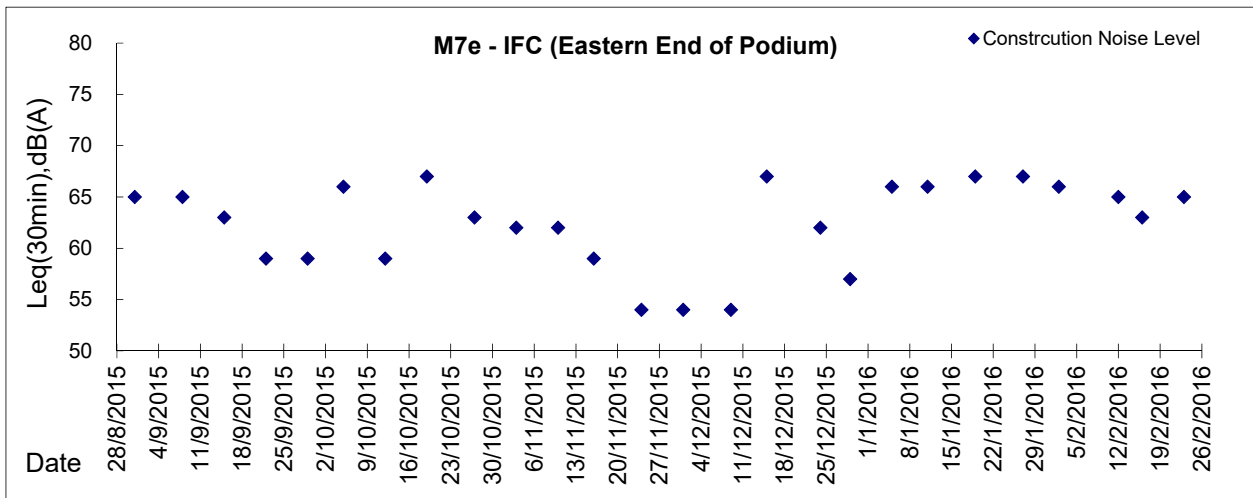
Day Time (0700 - 1900hrs on normal weekdays)





Graphic Presentation of Noise Monitoring Result

Day Time (0700 - 1900hrs on normal weekdays)



* Remark: M7e - IFC (Eastern End of Podium) is a reference monitoring station